



Welcome

News

What's On



Autumn in the Garden

Autumn is such a great time to get out in the garden. The warm weather begins to cool and the promise of rains are on the way. We also see many new plants become available from all the hard work the propagators and plant producers have been up to over summer.

There is a lot to get excited about this season, and we look forward to sharing the gardening journey with you.

Happy Gardening, Ross, Jackie, Alec and the team at Zanthorrea!



Welcome Andrew and Janine

Welcome Andrew and Janine to the Zanthorrea team.

Andrew is a keen Naturalist and nature lover, with a special interest in bugs and insects.

Janine comes from an Architect background, and has a passion for Australian plants. She also volunteers at Friends of Kings Park, and has an interest in helping people transform their verges with WA plants.

Be sure to say hi to Andrew and Janine when you see them out in the garden centre. :)



Congratulations Zeeshan!

Congratulations to Mr Zeeshan Ahmed on receiving two major awards for genomics and outstanding horticultural research: the Rod Tallis Youth Award 2026 from the International Plant Propagators' Society (IPPS) and the Australian Plant Phenomics Network (APPN) Postgraduate Internship Award 2025. Zeeshan is researching our very own variegated kangaroo paw 'Stripie'. His research will help us better understand variegation, trait stability and developing reliable commercial production. Thanks for the research and congratulations on your awards!



Standard Grevilleas

Standard grevilleas make an amazing feature plant in the garden. They have not been available for a while, but recently we managed to source one hundred plants. They are now growing on nicely in our production area, and should be ready later in autumn. Keep an eye on our social media for the release announcement. :)

Easter at Zanthorrea

Friday 3rd to Tuesday 7th April, we are open every day, 9am to 5.30pm. A great time for some Happy Easter Gardening!



Perth Garden Show 2026

Friday 17th to Sunday 19th, Zanthorrea will be back at the show for 2026. We will be showcasing a range of Kings Park Favourites, and new hybrids from their breeding program. There is plenty to see at the show, and we hope to see you there too!



ANZAC Day 25th of April

ANZAC day honours the first time that Australian & New Zealand armed forces joined together in battle. We mark this occasion with remembrance and the red Flanders poppies.

Kings Park has also created beautiful Grevilleas for us to plant in our gardens such as 'Spirit of ANZAC', 'Woman of Spirit' and 'Legacy Flame'. This ANZAC day we will have the Grevillea 'Spirit of ANZAC' for sale along with an assortment of red poppies and will be open all ANZAC day long weekend 9am – 5.30pm.



Gardening for Beginners



we all develop a list of reliable performers — plants that tolerate a little neglect (or even a little too much love!) and thrive across a range of conditions.

When in doubt, ask questions. Learn from others. And be willing to experiment — that's often where the magic happens.

This Is What We Love To Do

Gardening is often described as relaxing and grounding — and it truly can be. But for many gardeners, especially those just starting out, that dream can quickly feel out of reach when challenges arise.

Here in Perth, even experienced gardeners are sometimes left scratching their heads when plants suddenly decide to give up the ghost. Our extreme summer heat and notoriously poor soils create unique conditions that can feel daunting — and sometimes expensive — particularly for beginners or those still building confidence.

The good news? With the right knowledge and thoughtful plant choices, success is absolutely achievable.

Three Tips for Beginner Gardeners

1. Seek Local, Current Advice

Gardening evolves with the climate — and as our climate changes, many of the old rules no longer apply. Books and online content are often written for very different growing conditions, and well-meaning “old wives’ tales” don't always reflect today's temperatures and seasonal shifts. Tip: Source up-to-date, local advice that's relevant to where you're gardening.

2. Ask Questions and Take Educated Risks

Our horticulturalists love supporting gardeners at every stage of their journey. Over time,

3. Observe, Learn and Grow

Gardening skills develop through observation, experience and time. In my experience, time teaches us to focus on what we can control and trust the process. Some plants go backwards before they go forwards. Some thrive with neglect, while others need more consistent care.

The only way to learn this is to be present — to watch, notice and respond.



Reliable Plant Performers from the Team

Ross: “I'd recommend Eremophila ‘Magenta Miss’. It has performed beautifully in sandy soil over clay. I love seeing the small birds visiting the flowers — and the blue-banded bees too.”



Rebecca: “If you're looking for an indoor plant for a low-light area, I recommend ZZ plants. They're extremely hardy and a fantastic option for beginner gardeners.”



Clare: “Many beginner gardeners want to grow banksias. I've found Banksia media and Banksia nivea to be great starter banksias — they're slightly less fussy than some of the others.”



Ciara: “I recommend Myoporum insulare (prostrate form) to anyone looking for a foolproof groundcover. If you check Florabase, you'll see it naturally grows from north of Geraldton right along the coastline to beyond Ravensthorpe. Its adaptability to different climates is incredible.”



Pam: “For dry shade, Correas are a wonderful choice. They're hardy, bird-attracting and cope well in those tricky low-light spots.”

Gardening isn't about perfection — it's about persistence, learning, and celebrating small wins. With the right plants and the right advice, your garden can become the relaxing, rewarding space like it's meant to be.



Autumn Gardening



Green Bird Flower *Crotalaria cunninghamii*

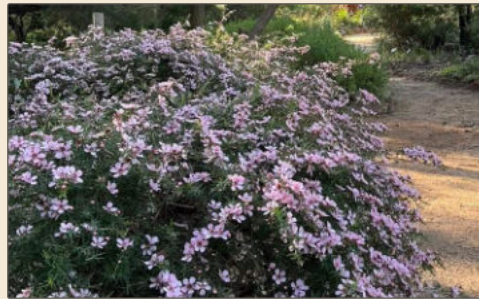
This unique plant is a real conversation starter in the garden! It is a medium sized shrub with soft silver/grey foliage and a fairly open growth habit, but it is the flowers which make it a true showstopper. The large pea flowers that are produced in dense spikes, are green with dark purple stripes, and resemble a hummingbird attached by the beak to the stem of the plant. In their native range of northern WA and Australia they flower nearly all year, however, in Perth their flowering is usually restricted to the warmest months. They require excellent drainage and full sun, all day to flower at their best. Although they are a short-lived perennial in their natural range, they are generally treated as an annual in Perth, so be sure to collect the seeds.

1.5m H x 1.5m W in Perth (larger in tropical areas) - Amy

Lovely Leptospermums

We have a beautiful range of Leptospermum (Tea trees) in stock at the moment. These hardy, versatile shrubs thrive in most soil types and positions, making them an excellent choice for WA gardens. Perfect as screening plants or feature shrubs, they offer year-round appeal with minimal fuss.

Often known as Tea Trees, these Australian and New Zealand natives produce masses of delicate, waxy flowers in shades of white, pink, and deep red. Not only are they stunning in bloom, but they also attract bees and other pollinators — a fantastic way to support biodiversity in your garden.



A Cascading Favourite:

Leptospermum 'Pink Cascade' is a true delight, smothered in dainty soft pink flowers that gently spill over garden edges, low walls, and rockeries. Easy to grow and adaptable to a range of soils and climates, this popular variety adds a beautiful softening effect wherever it's planted.

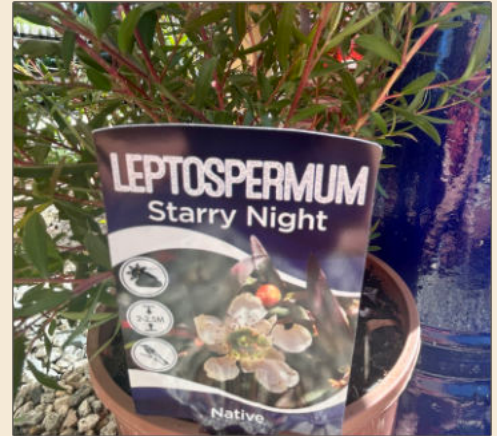


Perfect for Small Gardens & Feature Planting:

- Leptospermum 'Cardwell' – white flowers, approx 2m.
- Leptospermum 'Merinda' – vibrant magenta flowers, approx 1m.
- Leptospermum 'Tickled Pink' – bright pink flowers, approx 2m.
- Leptospermum 'Outrageous' – striking deep red flowers, approx 2m.

Elegant & Versatile:

Leptospermum obovatum 'Starry Night' is a beautiful medium-sized



shrub with graceful, pendulous foliage and large white flowers appearing in late spring and summer. Low maintenance and responsive to pruning, it's ideal as a hedge or feature plant.

Ideal for Low Borders:

- Leptospermum 'Dwarf Red Tea Tree' – compact growth to approx. 1m x 1m

Whether you're looking for a feature shrub, a flowering hedge, or a low border plant, Leptospermums are a reliable and rewarding choice. - Clare



New Season Seeds have Arrived in Store

We love Edens Seeds as they deliver quality, traditional open pollinated - non hybrids seeds.

Once this late second summer (Bunuru) heat has settled down, start germinating and planting out broad beans, brassicas, beetroot, carrots, leeks, lettuce, kale, mustard greens, onions, peas, parsnip, silverbeet, turnip, rocket, celeriac and celery.

Why not give growing from seed a go? it's so fun! - Clare



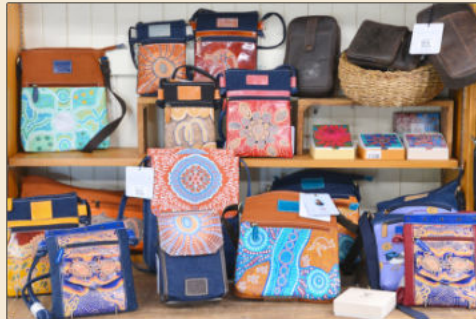
The Gardener's Gifts



Peeking Pups Collection

Six curious pups are ready to brighten your morning. From Golden Retriever to French Bulldog, Katharine Sheard's detailed pencil artwork captures their cheeky, playful personalities perfectly. The 370ml fine bone china mugs are dishwasher and microwave safe and guaranteed to make you smile with every sip. Mugs \$17.95. We also have matching water bottles, tea towels, and aprons!

bacterial, they make everyday dressing a little more fun. \$16.95 – \$19.95 per pair.



Leather and Canvas Bags

Our favourite range is back with fresh stock. These leather and canvas bags feature original designs by Australian artists, celebrating Indigenous heritage, bold creativity and stories of connection to land and family. Practical, beautiful and ready for everyday adventures, they also make a thoughtful gift. Prices start at \$24.95.



Gweld Art

This autumn we are celebrating the incredible work of 3D metal artist Owen Parry by show casing one of his 6 artworks from his Karijini series 'Fern Pool'. This artwork is for sale at Zanthorrea but you can also see many of his other works by visiting his website gweldart.com.au or Facebook page Gweldart.

Owen can also turn your own photography into a 3D metal art work.



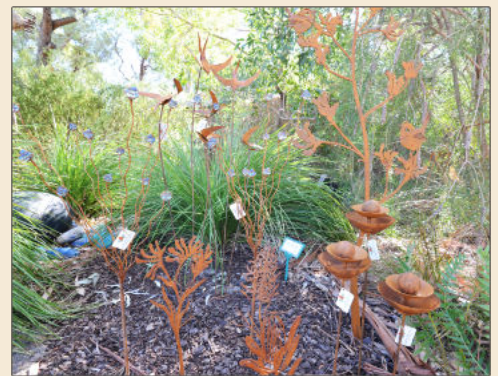
Bamboozld Socks

Step up your sock game with Bamboozld. Super soft and sustainably made from bamboo, these socks feature dogs, frogs, birds, bees and a range of native Australian animals. Some designs showcase original artwork by Indigenous artist Nathan Patterson. Comfortable, breathable and naturally anti-



Garden Themed Ceramics

Glossy green glazes tie this garden-inspired collection together, with embossed strawberries and charming insect details adding a playful touch. From generous platters to petite bowls, these pieces are made for serving, sharing, and gathering around the table with friends this autumn. Prices start at \$12.95.



Garden Stakes

Add some height and interest to your area with garden stakes. There are many styles, heights and designs to choose from for both your pots & garden beds. With prices ranging from \$4.95 - \$154.95 there is something for everyone. Please be mindful that the range changes regularly.



zanthorrea nursery

155 Watsonia Road,
Maida Vale, WA 6057

Phone: (08) 9454 6260

www.zanthorrea.com