



## Welcome



A warm welcome to our summer newsletter. Over the last few months we have had mild spring weather with welcome rain. We would very much like to see this continue into summer. Last summer had many days of hot temperatures, so choosing drought tolerant plants has never been more relevant. See page 3 for some options. On page 2 Clare looks at our amazing Australian pollinators. We hope you enjoy the read!

Christmas is approaching, and we look forward to spending time with family and friends. We wish everyone a safe a joyful festive season, with plenty of time in the garden!

Ross, Jackie, Alec and the team at Zanthorrea.



### Welcome Murray

Murray has been working at Zanthorrea for 6 months now and brings to the team a passion for Australian plants, healthy soils, permaculture and wood working.

## News



### Chamber of Commerce Awards

Ross and Conny had an amazing time at the recent Kalamunda Chamber of Commerce Awards night. We were very proud the Grevillea 'Little Jean' was a finalist in the Outstanding Local Product category.



The Excellence in Retail Award was sponsored by Zanthorrea. There was stiff competition, and we congratulate Dreams Jewellery & Gifts on their award and achievements!



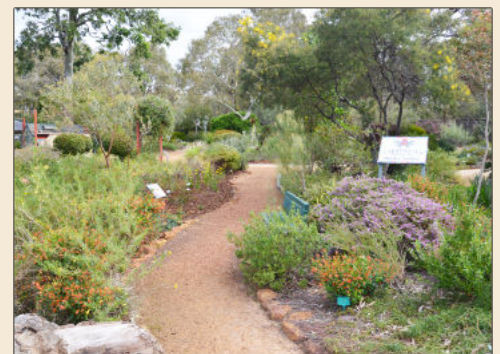
## What's On



### Bush Tucker Plants

Bush Tucker plants are becoming increasingly popular and have many uses in the kitchen. Join Janine to learn all about about the Australian bush tucker plants and how you can use them.

**10am, Saturday 14<sup>th</sup> January**  
**Gold coin donation to Kanyana**  
**RSVP: 08 9454 6260**



### Simple Garden Plans

Garden designs don't need to be complex. Even a simple "master" plan will be of great use when choosing plants and planting out a garden. Join Ross as we look at creating a simple plan for your garden.

**10am, Saturday 18<sup>th</sup> February**  
**Gold coin donation to Kanyana**  
**RSVP: 08 9454 6260**

### Merry Christmas from all of us at Zanthorrea!

We will be closed Christmas Day and Boxing Day, opening again for all your garden needs at 9am on the 27<sup>th</sup> December.



## Pollinating Australian Plants



pollinated group of plants. The butterfly's long proboscis reaches deep into the flower to reach the nectar.



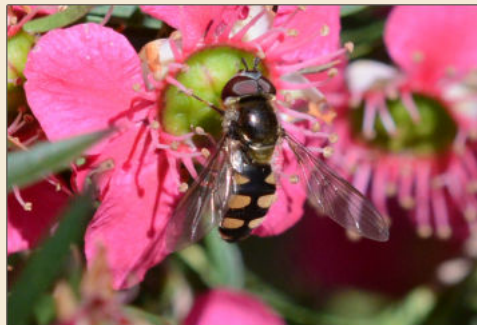
Zanthorrea is alive with the sound of busy pollinators, attracted by pollen, nectar, scent or visual clues offered by the variety of flowers we have growing in our garden and nursery.

heavily on the special kind of 'buzz pollination' that vibrates the flowers and only certain native bees can do the job effectively.

So why does this excite us and why is attracting a diversity of insects into our garden so important?

Most people do not think of flies as pollinators. However, they are one of the most common and successful garden pollinators and they come in many shapes and sizes. Many gardeners will be noticing the hoverflies in their

Insects are an integral part of a healthy ecosystem. They not only play an important role in the pollination of our plants but they also are food for birds, reptiles, amphibians and mammals.

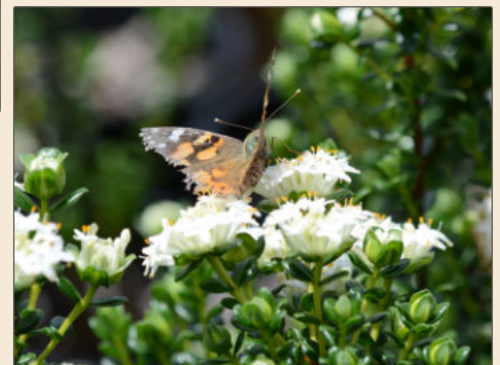


Many people don't think of ants as pollinators. However recently I read in Cosmos magazine that researchers have discovered that the flowering smoke bush, Conospermum have evolved to enable ants to pollinate them as effectively as native bees. I include here a link to the article as it is a fascinating read.

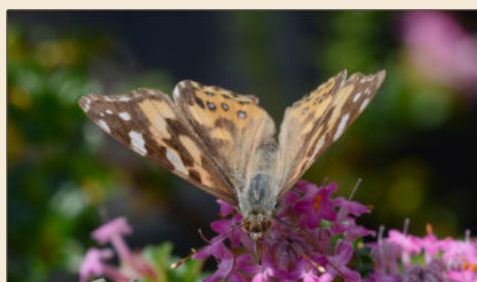
<https://cosmosmagazine.com/nature/step-aside-bees-the-ants-are-pollinating/>



gardens. These amazing flies with their mimicking features and distinctive flight pattern of hovering among flowers, feeding on nectar and pollen are not only pollinating but also helping with pest control. After mating, they lay their eggs in aphid colonies and it's their larvae, which look maggot-like, that voraciously devour the aphids and keep balance in the garden.



Many people just think of the European honeybee when it comes to pollinating plants. While these bees do a great job for many ornamental plants and our herbs and vegetables, they are not so great for the pollination of many of our Australian native plants. In fact, the pollination of our native plants is intricately balanced and designed with certain relationships with different insects such as flies, native bees, butterflies, birds and even ants!



To attract native bees, flies, butterflies and other beneficial insects into your garden click on this link to Sustainable Gardening Association webpage and read about how you can create a garden that invites diversity of insects to improve the overall health of our plants and environment.

<http://www.sgaonline.org.au/wp-content/uploads/2020/09/200929-Native-Bees-and-Butterfly-notes.pdf>

For example, the Myrtaceae family and genus of Hibbertia, Thysanotus and Dianella all rely

*Calytrix* and *Pimelea* flowers are an example of a butterfly-

- Clare



## Australian Plants for a Drying Climate

You may say we are in a drying climate after last summer.... or you may not after the wet winter and spring we have just had. Local climates can change over time. Plants are amazing and many have adapted to survive long dry periods. This may be just what you are looking for if you want to keep your water bill to a minimum.



### Lovely Local Plants

Local plants are wonderful. They have been growing here for a very long time. Already adapted to the climate, they will continue to adapt. They are suited to our soil types and have many benefits for the local fauna. I encourage everyone to reintroduce some local plants to their garden.



### Plants from Drier zones

If the Perth climate is drying, then even some of the local plants may struggle. Plants from a drier area may perform even better. Emu Bush is considered one of the best desert loving plants, and can survive with minimal rainfall.



### Kings Park Breeding

Kings Park have a state of the art breeding program and it is exciting to see all the new plants being developed. These plants are bred and selected on both their attractive features like long flowering times and also on their drought hardiness for the home garden. Check out Grevillea 'Scarlet Moon' and Grevillea 'Spirit of Anzac'.



### Old Favourites

Some plants have been around a long time. They are still popular, as they are amazing additions to the garden. Here are just a couple of our favourites:



Eremophilas are an amazing genus with a variety of flower colours and shrub sizes.

Some of our favourites are Eremophila 'Kalbarri Sunset' and Eremophila calorhabdos.



Callistemon 'Little John', Grevillea 'Robyn Gordon', Baeckea virgata miniature & Eucalyptus 'Silver Princess'.

### Zanthorrea Breeding

Here at Zanthorrea we also like to do some breeding. By selecting seedlings that stand out from the crowd, we have found attractive drought hardy forms. Have a look at Grevillea 'Little Jean' and Scaevola 'Brucie Royale'.



The Wheatbelt has some excellent drought tolerant trees. Consider the hardy Eucalyptus torquata or Hakea francisiana.



### Australian Annuals

A seasonal planting of Everlasting daisies will be drought tolerant as they die off in summer. Collect the seed for next year to enjoy these colourful flowers. - Ross



## All I want for Christmas....



### Decorations Galore!

From quirky to elegant, you are sure to find a new decoration perfect for your Christmas tree. From \$6.95 each.

### "Creating a Haven for Native Bees" Book - By Dr Kit Prendergast

An easy to read book for budding entomologists young and old with clear text and interesting photographs regarding the life cycles and habitats of our local native bees.



There is information about how to create the most successful bee hotels for your garden as well as other ways to help native bees such as a list of plants used for nesting materials and feeding. \$37.95 each.

### Beautiful Gifts to Pamper

Lisa has been busy creating beautiful displays of our homewares and body care products which are sure to impress. With gorgeous botanical inspiration, have a look at Pilbeam's Fragrant Draw Liners for \$17.95 each or Maine Beach



Body and Room Fragrances for \$18.95 each. Maine Beach's new fragrance this year, "Flannel Flower", is inspired by the Great Dividing Range region. I would describe it as fresh and uplifting.



### Back in Stock: Vanilla Mozi

We have been unable to stock this popular brand of natural Mozzie repelling cream for a few years now, but for all those who loved it, it is BACK! Not only is it proven to work, it smells divine. "Bite Proof" Body Cream \$33.95 and Soy Wax Candle \$42.00

### Kid's Corner

We have a really interesting and beautiful range of children's books on offer this Christmas including my favourite classics "Possum Magic" and "Snugglepot and Cuddlepie". (various prices).



Also available are Jigsaw puzzles, colouring books and these gorgeous handmade "Scallywag" toys by Thurlby Herb Farm that come with their own "Scallywag" soap. \$33.95 each.



### A Living Gift

Plants make a wonderful living gift. They raise our spirits, bring happiness and improve our well-being. You can make the gift even more special by popping the plant in a decorative pot.



# zanthorrea nursery

155 Watsonia Road,  
Maida Vale, WA 6057

Phone: (08) 9454 6260

www.zanthorrea.com