



## Welcome!



*I'm Stumped!*

### Verge signs

As we move into the warmer summer months, it is easy to acquire a greater appreciation of trees and the fantastic cooling they provide. Feel free to pop in for a stroll through our shaded garden.

One question we often get is: can I plant in summer? It can be a little more stressful on new plants, but if you are prepared to water your plants, then you will find they grow quickly this time of year. Just remember the soil improver, soil wetter, mulch and make sure the reticulation is all up to scratch!

Christmas time is fast approaching, and it is a time when we enjoy the company of family and friends. We wish you all the best for an enjoyable and safe festive season.

Ross, Jackie, Alec and the team at Zanthorrea.



*It is a good time to check your retic, just follow Alec's example!*

Thank you to everyone who sent in ideas for verge signs. We will have some of these ideas printed. If we do there will be a \$50 voucher for the person who sent it in. Keep an eye out when you are driving past for the new signs.



### Tomato Potato Psyllid

TPP is a serious pest that threatens our horticultural industry and home gardens.

It affects a number of crops including tomatoes, potatoes, capsicums, eggplant, chilli and cape gooseberry. For more information: <https://www.agric.wa.gov.au/tpp/home-gardener-information> for identification and treatments.



**Desert Plant Tip:** Some plants that grow in the desert only look good after it rains, so in the home garden it is recommended to maintain regular watering. These include: Ptilotus, Chrysocephalum and Sturt's Desert Pea.

## What's On



### Waterwise Garden Plans

Don't like watering your garden? Join us for a talk on how to best plan a waterwise garden. We will be looking at different soil types, how much water a plant actually needs and ideas for dry verge gardens.

**10am, Saturday 12th of January.**

**Gold coin donation to Kanyana.**

**RSVP: 08 9454 6260.**



### Photography Competition January

For the month of January we will be running a native plant photography competition with a focus on patterns and textures in nature. For all the terms and conditions visit: [www.zanthorrea.com/photo2019.php](http://www.zanthorrea.com/photo2019.php)



### Save the date: Garden Releaf

**Sunday March 24th.**

We are planning a fun day of inspiring speakers, sausage sizzle, pot painting workshop and it is all for a good cause. Keep an eye on our facebook page and website closer to the event for an update.



## Celebrating Trees



*Coral Gum.*

### Trees

We've all heard the old Chinese proverb: "The best time to plant a tree was 20 years ago. The second best time is now."

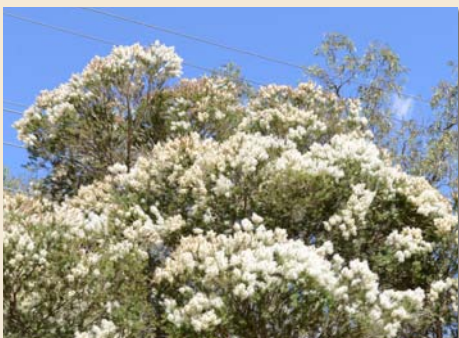
Trees are nature's air conditioner, reducing air temperature by many degrees.

The branches of trees provide perches and their flowers offer food for birds and other creatures.

Trees are nature's carbon store, removing carbon dioxide replacing it with health giving oxygen.

#### Can you plant a tree in summer?

Yes, providing you are not planning to go on holidays. With soil improver and regular deep watering your tree will flourish and surprise you with its growth.



*Melaleuca linariifolia.*

#### The team's favourite trees:

Jackie: Eucalyptus torquata

Alec: Callistemon Kings Park Special, pruned to shape.

Rose: Melaleuca linariifolia "Snow in Summer".

Melaleuca linariifolia is looking stunning at the moment with its dense white cap of flowers and rough paperbark trunks.

You can see a nice avenue of these trees driving to Kalamunda via Gooseberry Hill Road.

A small batch of plants is currently available in the nursery. ~ Rose



*Agonis flexuosa.*

#### It's Cool to Plant a Tree

Graeme's favourite tree.

Without hesitation, my favourite tree is the Peppermint tree (*Agonis flexuosa*). It is so versatile, growing in sandy soils or hills gravel, tolerating the dry times and the wet. The weeping form is spectacular, especially when in summer flower. It is great for kids, who can easily scramble up its low branches. The native peppermint is the perfect lawn tree. I love how the leaves drop to the lawn and the mower chops them up releasing a wonderful aroma. Scents of summer!



#### The Wollemi Pine

Wollemi noblis has a fascinating history that dates back to the time of the dinosaurs. The introduction of this living fossil into Garden Centres, helps raise funds for

conservation of the Wollemi in the wild.

The foliage of wollemis is most attractive. As juveniles, the frond like foliage is apple-green and changes to a blue-green colour as the plant matures. From around 6 years of age, its distinctive chocolate brown bubbly bark will start to form.

In Perth, the Wollemi pine grows best as a container plant in a quality potting mix suitable for Australian plants. As with many pot plants, it is important to water only when the soil is just dry and avoid saturation. Wollemis may be pruned to form a single trunk, or pruned down to create shrubby growth.

In cooler areas of the state, it may be planted as a specimen tree. The wollemi tolerates a wide range of soil types but prefers a well drained slightly acid, fertile site in sun or part shade. At maturity, trees in the wild have a spread of 3m and can grow up to 20m, however, expect up to 10 m in 20 years. The roots are said to be non invasive.



#### BEST USES:

- A unique gift.
- An attractive live Christmas tree.
- A patio or indoor plant in well lit areas.

*"How marvellous and exciting that we should have discovered this rare survivor from such an ancient past."* David Attenborough

Wollemi noblis have just arrived in time for Christmas. - Jackie



## Let the Garden Grow

### My Big - Small Plant

Our gardens are constantly changing. One special change I have noticed is when plants that are meant to be small, grow big. Judging how large a plant grows can be hard at the best of times as it varies between soil types, aspect, sun and how much fertiliser is added. Also some plants are short lived and some are long lived so should the size given be at the end of the plants life?



*Acacia Honey Bun Tree, underpruned.*

At Zanthorrea we give the sizing in an average span of time: 5-10 years and in average conditions so there can be quite a bit of variation.

The long lived small plants can have a special evolution in the garden. Over the first 5-10 years they will be a small shrub. Then if you are lucky enough and with some under pruning they can be a unique small tree after say 15-20 years. Now that is a long time to wait for a small tree, but if you are happy to give it space to grow, it is worth the time and effort.



*Eremophila bignoniiflora.*

Eremophila bignoniiflora may be pruned to form an arch, beckoning you to walk under it, along a path.

The dwarf sticky wattle (Acacia howittii) in the Zanthorrea gardens has been under-pruned to form an attractive tree. Size on label is 1m.



*A large old Sannantha 'Summer Stars', now 4m. These beauties can be pruned hard, back to a 1m hedge if you so desire!*

Also long lived and out growing their sizes: Baeckea virgata Mini, Callistemon 'Little John', Acacia fimbriata dwarf and Sannantha 'Summer Stars'.

### Bush Tucker Plants to Grow in Pots

Bush Tucker plants are great In pots I have a lot of plants in pots but my bush tucker pots would be my favourites. Here are my top three:



*Davidson Plum.*

Davidsonia sp. --Davidson Plum: great for sauces and chutneys. The fruit grow off the trunk.

Backhousia citriodora-- Lemon Myrtle: aromatic foliage that makes a lovely tea and the leaves are great for cooking too.

Citrus australasica --Finger Lime: Amazing fruit. Great for drinks, cooking and just delicious to eat straight off the tree.



*Lemon Myrtle.*

Pot them into a good size pot with Zanthorrea's Native Potting Mix. Mulch the top of the pot to retain moisture.

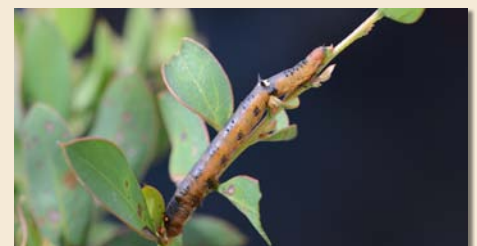
Keep them well watered, especially with the warm weather of summer.

PS : with Christmas approaching, why not try lemon myrtle shortbread, it is delicious!

Pop into Zanthorrea for your free recipe. - Janine

**Paula's summer tip:** Apply wetting agent before you go on holidays so the watering penetrates the soil.

**Lisa's summer tip:** Remember to top up water bowls and froggy ponds over summer. If you are away, perhaps a friend can pop in to top up water and keep the garden visitors happy.



### Enjoy a little Biodiversity

Sacrifice a few leaves on your rose bush to the leaf cutter bee to line their babies' nest. Leave a few spider webs for the birds to line their nests. Give a few caterpillars the chance to turn into a butterfly. Sit back and watch the honey-eaters and willy wagtails share the birdbath. The more you share your garden, the less you will need to reach for the pesticides. - Muriel



# Merry Christmas from all of us at Zanthorrea!



- (1) Christmas Candle \$14.95. (2) Christmas Angel \$10.95. (3) Wild Earth Eau De Toilette \$34.95.
- (4) Wild Silk Parfum \$29.95. (5) Wild Body Lotion \$24.95. (6) Votive Candle \$15.95. (7) Cup \$13.95.
- (8) Drawer Satchet \$9.95. (9) Trinket Dish \$9.95. (10) Coaster \$5.95. (11) Espresso Cup \$6.95.
- (12) Garden Jug \$37.95. (13) Tea Infuser \$14.95. (14) Pot Holder \$9.95.
- (15) Christmas Decorations \$3.95. (16) Oven Mitt \$14.95.



# zanthorrea nursery

155 Watsonia Road, Maida Vale  
Western Australia, 6057

Phone: (08) 9454 6260

Fax: (08) 9454 4540

[www.zanthorrea.com](http://www.zanthorrea.com)