



Welcome



Hello again,

Summer! Lazy balmy days are with us. It can be a challenge to get much done in the garden when it's hot. Early mornings and late evenings are the best time to potter in the garden.

It's still fine to plant over the summer months, in fact plants grow faster when the weather warms up. Simply use soil improver and mulch, and ensure regular water while the plants settle in. We have lots of wonderful plants to tempt you when you visit.

Summer is a great time to plan, and we are delighted to help you create the garden of your dreams. Garden consultation is now available for a small design fee, or catch one of our horticulturists on duty to get free advice. (We have plenty of time on hot days to help!)

In the cool of the late afternoon the nursery comes alive with bird song and frog calls. By nightfall Zanthorrea is a very special place. Hope you can join us for a sundowner celebrating the festive season, and enjoy the nursery after hours.

To all our friends and fellow gardeners, we wish you a very Merry Christmas.

– Best wishes from Jackie Alec
and the team at Zanthorrea

What's on at Zanthorrea?

Christmas Sundowner

Tuesday 14th December, 5.30pm to 7.30pm

Join us for an evening sundowner to celebrate the Christmas season.

- Sausage sizzle, Chrissie cake and other festive refreshments
- Be entertained by local singers
- Be the first to see our Christmas displays and gift ideas
- Meet our local artists
- Browse in the peaceful nighttime surrounds

Let's celebrate! Please RSVP to Zanthorrea on 9454 6260.

Waterwise Garden Assessments

The Water Corporation have developed a one hour 'Waterwise Garden Assessment' to help you make changes and save precious water in your garden. For only \$65, a Waterwise consultant will visit your garden and prepare a written report.

Assessments are only available through your local Waterwise Garden Centre. Look for the logo.



Professional waterwise advice.



Acacia denticulosa - fire retardant
(available in winter)

Christmas trading hours

Open every day 9am to 5.30pm, except Christmas Day.

Fire prevention talk

Sunday 16th January, 10am
with Jamie Hubble, from FESA

With the current hot conditions, all householders need to take special care to prevent their home becoming a fire statistic. Find out what you can do to prevent fire at your property. Jamie's sister, our very own Kathy, will be on hand with a collection of fire-proof plants for your garden.

RSVP 94546260

Fire retardant plants

The plants around the house can make a huge difference under bushfire conditions. Shrubs and trees with large amounts of volatile oils, such as conifers and eucalypts may erupt with the passing of a fire, and intensify the flames. Others such as succulent saltbushes and wattles can cool the advance of a fire.

For a list of fire retardant plants, pick up an information sheet from Zanthorrea, or go to the website

<http://www.zanthorrea.com.au>



Fabulous Flora

Notes from the Jungle

(the outback of the nursery)

In our growing area, summer encourages the plants to get a wriggle on and this can upset our daily scheduling.

As Ross enters the tube house to select some more tubes for potting up, so many babies seem to be saying 'Pick me! Pick me!' Winter gloom is gone and plants like summer flowering scaevolae and helichrysums are bursting out of their tubes.



Daniel is having to make choices too. Smooth stemmed Moonlights are vying with the lovely leaves of Bush Golds to be first on the take-up trolley. We have the best ever Gilt Dragons now at \$8.65 and the Gaudi Chaudii are a joy to see.



Come in and have a look!

– Alec

Zanthorrea plants are brought up tough in our on-site NIASA accredited nursery. We guarantee them to be healthy and hardy.

Special plant: *Beaufortia purpurea*

Flowering now and through to January, this local plant can be seen on most bush walks involving the gravel and rocky ridges of the Perth hills.



Beaufortia purpurea in flower

Bright little 20mm pom pom flowers start off red and turn purplish with age. The bush only grows to about 1m and is dense in high light areas, often growing in thickets of other plants. In your garden you can recreate these conditions. *Beaufortia purpurea* is a fat little bush of 80cm in full sun, or as part of a shrubbery will stretch to 1.2m. For those on the sandplain, plant with soil improver and some slow release fertiliser.

If you would like some of this summer colour, we have plants in 140mm pots at about 15cm high for \$9.65

Website news

December marks the launch of Zanthorrea's new website, with a host of new features!

Check out the new section called **Meet the Team**, with pictures and profiles of our staff, and new info sheets in the **Gardening Info** section.

Also we now have an online database in the **Australian Plants** section, with information on all of the plants we commonly carry, including many photos. Visit:

<http://www.zanthorrea.com.au>

Cool clear white flowers

Think Sissinghurst in the UK, and think white. Thousands flock to this famous garden, and queue for hours to get a glimpse of the "white garden".

White flowers create a cool and restful space. Transform a corner of your garden with cooling white flowers.

Look for:

- Wedding bush (*Ricinocarpus tuberculatis*)



Ricinocarpus tuberculatis

- *Calytrix ericoides*
- Rock daisy (*Brachyscome white*)
- Snake bush (*Hemiandra pungens white*)
- *Grevillea 'Moonlight'*
- Coastal correa (*Correa alba*)
- *Callistemon 'White Anzac'*
- *Grevillea crithmifolia*
- *Hakea lissocarpa*
- 'Snow in summer' (*Melaleuca linarifolia*)
- Lemon scented tea tree (*Leptospermum petersonii*)
- *Baeckea miniature*
- *Philothea myoporoides*

Stop press!

Our summer Kanyana Plant is the *Grevillea Gilt Dragon*, \$8.95

\$1 from each plant sold goes to Kanyana Wildlife Centre



The Australian Garden

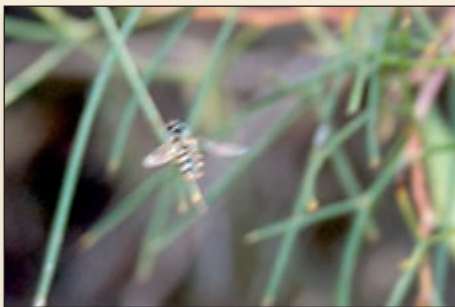
The Buzz

Wandering around the nursery is a delight at this time of the year. An abundance of wildlife hopping skipping flying swimming and buzzing about. And I don't mean the staff!



Tadpoles like helium balloons floating peacefully in one pond, a little tree frog perched on a lily leaf in another. Just the way it should be.

Speaking of bees - I am delighted to announce that the blue-banded buzz bees are back! One of the first of our native bee species to appear over summer and one of my favourites. They look like a March fly but don't bite or sting, and they release pollen from certain flowers by vibrating the stamens. You can watch them buzz pollinating the hibbertia and dianella flowers near the toilet block at Zanthorrea.



Other harmless bees like the cute little iddy-biddy reed bees love summer flowering croweas and small scaevolae. Invite them into your garden by planting flowers you can all enjoy. – Kathy

What to do in the Summer Garden

Pruning

Everything in the garden is growing fast in the warmer weather, so tip prune to reduce leaf volume. Plants which have outgrown their position, will recover quickly if pruned over summer, so cut back tropical grevilleas, small eucalypts, tea trees and bottlebrush, to stimulate healthy bushy growth. Always use clean sharp tools to avoid damage.

Water

It goes without saying that water is the most important element of the summer garden. It saves lives to regularly check sprinkler outlets. Water Corporation "catch cups" are available at Zanthorrea for \$3.95. Catch cups measure the water emitted by your sprinkler system, and highlights if one outlet is delivering less water than others.

If handwatering, ensure the soil is wetting to a depth of 5cm. Especially in heavy hills soils, or water repellent sandy soils, water may be wasted - failing to penetrate to the plants' roots. Use the single finger test for soil moisture!

Fertiliser

In areas of the garden which are watered over summer, two tsp of slow release fertiliser will ensure strong healthy growth. Wait until autumn to feed areas of the garden which are not watered.

Mulch

The advice from the water Corporation is to choose a mulch of large particles, one which will not absorb moisture. In a watered vege or flower garden, compost or straw works well to cut down weeds and provides nutrient as it breaks down. The down side is, compost and straw both absorb moisture, so perform poorly as waterwise mulch.

Time to plant

- Summer vegies – tomato, cucumber, zucchini, watermelon, rockmelon, corn, silverbeet, eggplant, chilli, capsicum, sweet potato, carrots.
- Herbs – basil, parsley, oregano, rosemary, thyme, chives, sage.

What's flowering now?



Scaevola 'Purple Fanfare'

Although the spectacular flower displays peak in spring, there are still plenty of flowers in the summer including:

- *Grevillea 'Moonlight'*
- *Grevillea 'Honey Gem'*
- *Beaufortia purpurea*
- *Scaevola 'Purple Fanfare'*
- *Brachyscome 'City Lights'*
- *Helichrysum ramosissimum*
- *Anigozanthos 'Big Red'*
- *Eremophila maculata*
- *Verticordia mitchelliana*



Grevillea 'Honey Gem'



What's new?

Nesting boxes



The parrots are back in the nesting box above the seedling bench with five eggs just hatched. Six eggs were successfully hatched in early spring. The bats have discovered their specially designed bat box.

Craftsman Joe Tonga has made it his mission to set up breeding boxes throughout Perth. Joe can quote on supply and installment of boxes in your garden.

Contact Joe direct on 0418 918 367

While on the subject...

Tired of flies spoiling your time in the garden? We now stock fly nets which easily slip over your hat. 'No flies' nets are \$8.95

The small natural coloured hold-all bags with a fly print 'walked' out the door, soon after the first order arrived. The next consignment is due any day now - look out for them when you visit. A lovely unique gift at \$11.95 (Also available in ladybird print.)

Time to plan

Well here we are again.

Summer has reared her hot head and thoughts turn to lazy days spent under the shade of a tree with a good book.

It's a great time to take a new look at your garden (from that shady spot, with a cool drink and between naps, of course!). You may notice areas that just don't thrive or even be dreaming of a whole new look!



By planning your garden in the warmer months you can be ready to plant with the autumn rains.

If it all seems a little overwhelming why not call upon the services of one of Zanthorrea's recommended garden designers to help you create a beautiful Australian native garden. All are qualified horticulturists with a wealth of gardening knowledge. For \$90 call-out which includes a one hour consultation, they can help your gardening dreams come true.

— Andrea

Garden design in small spaces

Trends show that there is a move to smaller properties with courtyards or very small gardens, not just retirees but younger busy couples with very little leisure time for gardening. Using masses of beautiful plants in a large garden will look impressive, but how do we create drama in a small space.

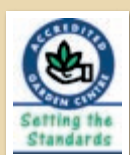


The secret is to use a simple theme with limited species of smaller plants to give an illusion of space. Small gardens can link with the design and colours of the house. As many small gardens are contained by walls and fences, it is possible to use colour for impact, and then complement with plant choice.



For more ideas on garden design in small spaces check out the Zanthorrea website, and download an info sheet.

PS: Don't forget the Waterwise Garden Assessment. For a small fee, a consultant will visit your garden to help you make changes and save water. This service is great value at \$65 for a one hour consultation.



Zanthorrea Nursery is proud to be AGCAS accredited.



155 Watsonia Road, Maida Vale
Western Australia, 6057

Phone: (08) 9454 6260

Fax: (08) 9454 4540

<http://www.zanthorrea.com.au>



Local Artist Profiles



Paul Moro

You will have no doubt noticed the metal artwork of Paul Moro at Zanthorrea – his frogs, wrens and giant metal insects are scattered throughout the gardens and gift shop.

Paul likes to think that his work makes people smile, and says “I enjoy the buzz

I get from the creative process through to the finished piece”. Paul lists his hobbies as bushwalking, cycling and inventing, but has little time to develop the garden, which he describes as “a work in progress”. He says he would be happy for Backyard Blitz to arrive!

Paul, along with his wife and business partner, Kaye, will be spending Christmas at their home and studio in Kalamunda, around the pool with family and friends.

Meryl Bell

Meryl is a York botanic artist who describes her work as “a full time obsession”!

She is certainly obsessed with what she calls “the miracle of the natural world about us”. She works in her garden to make it a home for birds and creatures and if she wasn’t an artist she says she would be working to save the environment, helping to preserve the value in our built environment or teaching gardening.

She enjoys her work because she sees it as “creating something of value which gives pleasure while making people aware of the magic of our special environment.”



Kathryn Diss

Kathryn began making bird feeders with her father to help pay for her expensive braces!

She is a 15 year old Roleystone District High School student who enjoys netball, tennis, art and craft,

cooking and photography when she’s not making bird feeders. She says it is hard work, but she appreciates the quality time she gets to spend with her Dad. Despite what you might guess, she has no intention of following a career in woodwork (“I think I’d go mad if I had to do it every day...!”) but aspires to study at Curtin and become a Channel 7 News Reporter.

This Christmas Kathryn will be holidaying with her family in Bremer Bay. Her school ball is the week before – and she is getting her braces off just in time!

Ian McRae, Beaufort Pottery

Ian has been a potter for 35 years, although he says it feels like more than one hundred. Before that, he was an engineer, and his wife, Jennifer, was the potter. He has had studios in Scotland, South Africa and Queensland, and now resides in a cottage in Hilton, which is surrounded by a gorgeous cottage garden, tended by Jennifer.

Ian describes his time in his studio as relaxing - “it’s almost therapeutic”. His work is concerned with “the subconscious admiration for the simplicity of the flowing form”. His glazes are a modification of traditional stoneware recipes, and are gloss reduced with a translucency that intensifies colour and gives the illusion of deep water and infinite skies.

Ian considers the location of his studio, so near to Freo, perfect for his favourite hobby, sailing – “I like to live by the sea.”

