

## Welcome



Spring has arrived early at Zanthorrea as we open our gardens to the gardening public as part of the Australian Open Garden scheme.

Our gardens display a wide range of mature Australian plants interspersed with new plantings including massed pink and white everlastings. Local artworks such as a giant bobtail and metal sculptures complement the native environment.

On the weekend of the 26th and 27th August, we invite you to join us for talks, guided walks, wine tasting and refreshments. Bring friends and family. There will be an entry fee for the gardens this weekend only and proceeds will benefit Kanyana and the local Volunteer Bush Fire Brigade.

One of the highlights of the event is the planting of an advanced Wollemi Pine by Josh Byrne from ABC's Gardening Australia. The story of the Wollemi is an inspiring one that you can read on page 4.

We are delighted to have talks all weekend from Josh, Eric McCrum, Paul Godwin, Sue Torlach and Jackie. (See back page for the timetable of talks.)

All Open Garden visitors will go in the draw for an advanced Wollemi Pine, valued at \$580.

Hope you can join us ,

– Alec Jackie and the team

## Australia's Open Garden Scheme

### Zanthorrea Display Gardens

The display garden at Zanthorrea is surely one of the best kept secrets in the gardening world of WA. For around 30 years since the nursery opened, visitors have watched its development from a humble collection of plants for gathering seed and cuttings to the botanic wonderland it is fast becoming.



Extensive plantings have been done very recently, greatly extending the diversity and range of garden styles. Don't miss seeing this award winning garden and watch it develop into one of the best Australian style gardens in the country.

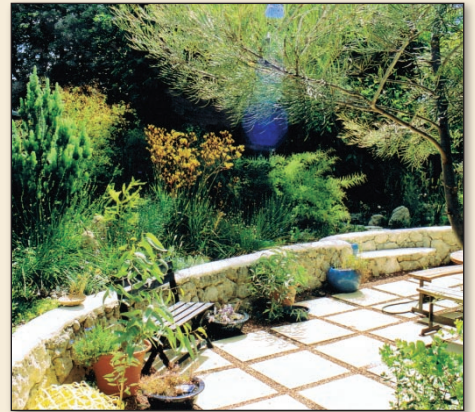


**26th and 27th August  
10am to 4.30pm**

Entry fee: \$5 – Proceeds from this event benefit Kanyana Wildlife Centre, and the Kalamunda & Districts Volunteer Bushfire Brigade.

This event supported by the Water Corporation and Wollemi Australia.

### Kathy's Garden



As part of the Australian Open Garden Scheme, team member Kathy has opened her wonderful garden to the gardening public.

Don't miss it.

### The Gallery Garden

Using a blend of over 150 Australian plant species and a handful of exotics, Kathy has skilfully created aspects of our beloved Australian landscape in two distinctly different gardens. In the Gallery Garden, you will discover many gorgeous specimens including the famous Royal Hakea.

As featured in the West Australian newspaper, this is your chance to see Kathy's garden for yourself.

**August 19th & 20th, 10am - 4pm**

Entry fee \$5.

28 Abbott Way, Wilson

### Zanthorrea's Wild Bushwalk

Join Jackie for a guided bushwalk and enjoy the local wildflowers.

Sat 3rd September 9.30am

### Brilliant and versatile banksias

Use these special plants confidently in your garden design. Sue Torlach, Wild about Gardens.

Sat 21st October 10am



## Themes and Schemes

The *Zanthorrea* display gardens are a developing showcase of garden styles using Australian plants.

Themed gardens include..

### Gazebo Garden

Extensive plantings of stunning lechenaultia exclusive to *Zanthorrea*, "Zande Grande", in soft baby blue flower at the time of viewing. (Their first year on display!) Two of the oldest trees planted in the nursery are near the bird feeder - a 31 year old, 33 metre tall rose gum (*Eucalyptus grandis*) and an 18 year old 2.7m WA Christmas tree (*Nuytsia floribunda*).



### Outback Garden with red river bed

Striking "river bed" flowing out of outback style plantings interspersed with a spectacular mat of pink and white everlastings. The tank and windmill symbolise the dry inland. Grey *eremophila* and eucalypts blend with grasses and *verticordia*. The slender mallee with bumpy fruit is *Eucalyptus pachyphylla* from the Great Sandy Desert.



Paul and Jackie

### The Australian Formal Garden

Clever geometric layout with various topiary specimens: a stylish wedding arch framing a view to a Paul Moro sculpture, with more traditional ball shapes and low hedges, all using Australian plants. Drifts of everlastings for spring colour soften the formal look.



### Banksia Garden

Though past his prime, old man *Banksia ericifolia* of 25 years shares his garden home with the trendy *Banksia* 'Birthday Candles'. South of the banksias bed you may spot the "tree in a tree", *Acacia fimbriata* 'dwarf' 1.5m up in an old jarrah tree stump.



Shelley

### Bee City

The coloured vertical sleepers have narrow holes drilled into them to provide a home for native bees. They create a backdrop for the insect attracting plants nearby. *Acacia* 'Limelight' at the base is an outstanding plant. Opposite bee city, view the 'scientific' armillary sculpture by Peter Graham.



### Jarrah Grove

Enjoy this tranquil area where a couple of mature jarrah trees were coppiced 60 years ago. The shaded seats provide a resting place where you can view the birds that are attracted to the various under-storey plants.

### Barrett's Grove



Alec

Closely planted pink whitewoods (*Eucalyptus leucoxydon* Rosea) are giving a vertical look accentuated by low grey foliage understorey. The trees will require regular pruning to create a hardier version of the silver birch grove. – Alec Hooper



## Reviving and Renovating the Garden

### Making magic in an old garden

An old established garden can contain magical ingredients not possible in a young one. For example: Established trees, privacy and fullness, attractive weathering of hard surfaces and the “synchronicity” or “beautiful accidents”, which had to evolve over the years and could never be planned.

The extensive gardens at the nursery certainly contain all of these. Thus it was with feelings of respect and great excitement that I began working with this garden around 18 months ago.



*Paul pruning*

### Where to start

Stop! Before you lift a chainsaw, take some time to really get to know your old garden. Begin gradually, surprises will be revealed in different seasons.

Begin with the obvious work: Removal of dead, badly diseased or “definitely past it” plants; controlling serious weeds; cleaning up and dead-wooding (one of the most important jobs in an old garden).

### Pruning

Chances are the garden has been neglected and some serious pruning will make a big difference! Have a good look at each plant and consider its possibilities. Know what you are trying to achieve with each plant.

Some options are:

- Tip pruning to improve bushiness
- Thinning to allow more light in or improve airflow
- Crown lifting / underpruning. Extensive use has been made of this at the Zanthorrea gardens to allow under-planting.

• Regenerative - cutting hard into old wood or even to the ground to produce bushy vigorous re-growth. (NB: This will only work with some plants but can be worth trying.)

See our website for further information on pruning:

[www.zanthorrea.com/info.php](http://www.zanthorrea.com/info.php)

### Horticultural aspects

There are certain challenges to working with an old garden.

- Shade – may be altered to some extent with pruning. Plant selection is crucial. We have a wide range available at the nursery.
- Root competition
- Variable soil condition
- A possibly inadequate watering system.

Nursery staff can be a huge help with these challenges.

*For further information see our website.*



*Diana deadheading*



### Design. The fun bit!

First ask some questions: What do I like and why? What don't I like and why? Do I want to change the layout or structure of the garden? Start with practical considerations before aesthetic ones, eg, your amenity requirements, shade, wind protection and privacy. What is the “feel” of the garden? Can it be built on to develop a theme?

Two major things I have tried to achieve with the Zanthorrea garden are:

- 1) Repeating plantings to give uniformity or a distinctive “feel” to an area. (Usually what you can see in one “eyefull”.)
- 2) Developing understorey plantings.



So congratulations if you have thought about all of this. Now you are at the really fun bit! You get to wander around the nursery with the help of our great staff picking all your favourite Australian plants.

Now stand back and watch your spell work its magic!

*– Paul Godwin, Horticulturist  
Zanthorrea Gardener*



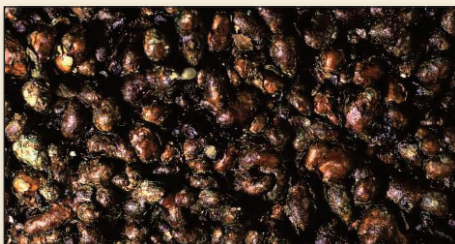
## The Wollemi Pine

Wollemi nobilis is one of the world's oldest and rarest plants dating back to the time of the dinosaurs. With less than 100 adult trees known to exist in the wild, the Wollemi Pine is now the focus of extensive research to safeguard its survival.



This plant was known from fossil records and presumed extinct until it was discovered in 1994 by David Noble, a bushwalker, in the Wollemi National Park just outside Sydney.

In the wild, the Wollemi is a majestic conifer growing up to 40 metres high with a trunk diameter of over one metre! The unusual pendulous foliage has light apple green new tips in spring and early summer contrasting against the older dark green foliage. Its bark is very distinctive and looks very much like bubbling chocolate!



### Growing the Wollemi Pine

The Wollemi Pine will make an ideal feature tree for large gardens and parklands, but can also be grown in a large pot on a verandah or in a courtyard. It can be used as

indoor decoration in well lit areas.

The ultimate survivor, the Wollemi Pine has proven to be hardy and versatile in cultivation. It is not only attractive and striking in appearance, it has been found to be easy to grow and low maintenance. It will adapt to a diverse range of climatic conditions, thriving in full sun to semi-shaded outdoor positions.

For more information:

[www.wollemipine.com](http://www.wollemipine.com)



### Fathers Day 3rd September

The Wollemi would make a memorable gift for dad. From \$68, The Wollemi comes beautifully presented, with a Care Booklet and Certificate of Authenticity.

We can assist in the conservation effort by purchasing a Wollemi Pine and becoming part of the most dramatic comeback in natural history.



Gazebo garden talks

### Timetable of Talks

#### Saturday 26th August

##### Flora for fauna theme

**10am:** Waterwise Gardening

– Josh Byrne.

**11.30:** Wollemi planting

– Josh Byrne.

**1pm:** Waterwise Gardening talk

– Josh Byrne

**3pm:** Backyard Bugs and Birds

– Eric McCrum.

\*By special request, Kanyana animals will be on display, including Elle the echidna and friends.

Delicious refreshments will be available for sale thanks to the volunteers from Kanyana.

#### Sunday 27th August

##### Garden design theme

**10am:** Contemporary design with Australian Plants – Sue Torlach, Wild about Gardens

**11am:** Revive and Renovate your garden – Paul Godwin

**1pm:** Creating spectacular gardens with Australian plants – Jackie Hooper

**2pm:** Revive and Renovate your garden – Paul Godwin

**3pm:** Creating spectacular gardens with Australian plants – Jackie Hooper

Delicious refreshments will be available for sale thanks to the volunteers from the Kalamunda Volunteer Bushfire Brigade.

PS: Wine tasting from Avalon Wines and food tasting from Big Island all weekend!



# Zanthorrea nursery

155 Watsonia Road, Maida Vale  
Western Australia, 6057

Phone: (08) 9454 6260

Fax: (08) 9454 4540

<http://www.zanthorrea.com.au>