



## Welcome



Autumn is the perfect time to plant! This issue, we feature a few easy projects to help get your garden back in shape: Pruning, dividing your 'roo paws' and growing your own plants from seed.

The nursery is looking fantastic and thanks to our great team, deserving of our recent award. There are many new release plants, including a delivery of unusual Australian plants from Native Plant Wholesalers in Mt Gambier. These cost a little more due to quarantine and freight but include species hard to find in WA.

There's plenty happening at Zanthorrea, so we hope to see you in the garden centre very soon.

Happy Gardening!

Alec, Jackie, Ross & team

Welcome to our new team member, horticulturist Rose, who works Sundays and Mondays. Pop in and say a cheery welcome.



Beautiful new plants from our friends in Mount Gambier

## Save the Date

### National Tree Day!

Planet Ark's National Tree Day Sunday 27th July.

Planting trees and shrubs are a good way to help our planet.

Get a group together and participate in National Tree Day: <http://treeday.planetark.org/>



### 202020 Vision

The 202020 Vision is a national campaign to increase urban green space in Australia by 20% by 2020. (That's 20% more trees and other plants in our towns and cities.) Governments and councils, along with landscape professionals are embracing this concept.

Read about 202020 on the website: <http://202020vision.com.au/>



Hoopers with judge Jennifer Stackhouse

### Congratulations to Zanthorrea

Zanthorrea has recently been awarded 'Best Specialty Garden Centre in Australia 2014'.

Judges comments:

"Well presented and attractive."

"Top quality stock displayed with appeal."

## What's On

### Easter egg hunt for the children

Bring the kids to Zanthorrea over Easter to explore the gardens and find all the giant eggs! A chocolate egg for finding all six coloured eggs.

### Kids in the garden

It's school holidays, so bring the kids in to pot a pansy.

Wednesday 23rd April, 10am - 11.00am (Suits 5 to 12 year olds.)

Gold coin donation to Kanyana. RSVP to 94546260

### Grow your own plants from seed

Saturday 26th April, 10am - 11.30pm.

Learn how easy it is to grow native plants from seed: how to extract seeds, treat and sow them and how to look after the young plants.

Gold coin donation to Hills Group, Gardeners Circle bushfire fund. RSVP to 94546260.



### Mothers Day Fundraiser Tea Party!

Celebrate Mothers Day with the ladies in your life in the beautiful surrounds of the nursery. Staff will be donating home made cakes (including gluten free) which will be served with tea or coffee from 10.30 - 3.30 for a \$5 donation. 100% of funds raised will go to the National Breast Cancer Foundation as research funds. Support a great cause and make a lovely day out of it! We hope to see you here!



Follow us on Facebook!





## Gardening 101

### Autumn Projects

Autumn is the perfect time to get back into the garden. There's plenty to do whether pottering with secateurs in hand or enjoying a little exercise digging in new plants.

- Add a few flowering plants or spot colour to fill in the gaps left by summer casualties.
- Feed plants such as kangaroo paws, scaevola and rock daisies with organic native plant food, or slow release fertiliser for natives.



- Rake back the mulch and scatter everlastings seed in bare patches.
- Divide kangaroo paws that are looking overgrown.
- Build a frog pond, and add some frog attracting plants such as knotted club rush and other strappy plants.

### Dividing Kangaroo Paws

Kangaroo paws are easy to divide. Any time after the first rains until June is a good time.

- Remove them bodily from the ground, take off any old or dying leaves and trim the roots to 10cms.
- Wriggle the rhizome into bits as this helps it break along its natural abscission layer (weak spots).
- Replant or pot the pieces into good potting mix. Look after the young plants very well until the new roots form - at least two months. Water in with a Seasol solution to reduce transplant shock.

Many varieties of kangaroo paws



are now available including our WA emblem (*Anigozanthos manglesii*), the black paw (*Macropidia fuliginosa*), our favourites 'Big Red' and 'Yellow Gem' and some of the hardier 'Bush Gem' range. – Alec



*Anigozanthos 'Big Red'*

### Autumn Pruning Tips

Autumn is a great time to get pruning in the garden, here are some tips to successful pruning:

- Always start your pruning with the 3 D's: Prune out any dead, diseased or damaged material to stop infections from spreading.
- Hard Pruning: The safe rule for 'Hard Pruning' is the one third rule: If unsure how hard you can prune a shrub, only prune up to one third of the foliage off.
- Tip pruning: It is as simple as snipping out the ends of the branches to create a bushier, denser shrub.
- Some plants have interesting trunks, beautiful bark or striking shapes, so it is good to try and

emphasize these features.

- Under-pruning: If a shrub has grown too big for a spot, maybe you can prune off the lower foliage and turn it into a tree? Works especially well with tropical hybrid Grevilleas!
- Use your feet during pruning to walk back and have a look at progress, you can't get an idea of shape standing right over the plant!
- It is a good idea to always give a light feed to your plants after pruning, this will give them energy



for new growth and flowers.

Be creative, have fun and enjoy pruning in your garden for both the health of the plants and the beauty of the landscape. –Ross

### Grow your own plants from seeds



- Fill a few clean pots with seed raising mix and tamp down to 10mm below top of the pot.
- Place a few native plant seeds on top of the soil surface, then sprinkle a little seed raising mix to cover.
- Water well with a very fine spray and place in a sunny raised spot.
- Keep moist until seeds germinate. Hard seeds like the ones from Acacias and Kennedias may need to soak in hot water before sowing. Smoked water also improves germination especially in Banksias.





## Autumn Colour

### What's Flowering Now

Autumn is a great season of colour and change. The rains bring out the colours of the native wildflowers. Here are some of the autumn flowering plants that are guaranteed to brighten the autumn garden:



*Correa 'Winter Bells'*

- Correas such as 'Canberra Bells', 'Orange Glow', and 'Dusky Bells'.
- Grevillea 'Ellendale', 'Gilt Dragon' and 'Peaches and Cream'.
- Chrysocephalum apiculatum, commonly called 'Yellow Buttons'.
- Banksia 'Birthday Candles'
- Scaevola (fanflowers).



*Grevillea 'Peaches and Cream'*

- Roo paws such as Anigozanthos 'Bush Pearl', 'Bush Ballad' and 'Bush Diamond' for colour that will last all the way into Spring/Summer.



*Banksia 'Cherry Candles'*

### Do you have Everlasting love?

What a fantastic display the pink and white everlasting daisies made last winter/spring! These are easy to grow from seeds. Simply remove weeds and rake the ground to form a seed bed. Mix the seeds with some soil improver or compost to help spread them evenly, then broadcast. Snail pellets are essential as the soft seedlings are very tasty!



Plant after the first decent winter rains, and water once a week through any dry spells.

### Potatoes are here!

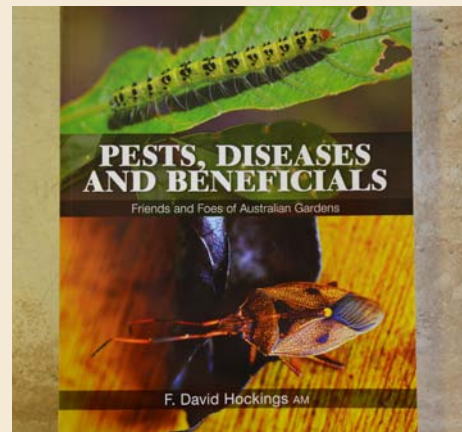
Sacks of new varieties of spuds are arriving each week. Currently in stock is Norland, Kestral and Delaware, more to come.

Growing your own potatoes can be



a rewarding experience and a lot of fun for the kids. The trick to success is to improve the soil with plenty of organic matter and fertilise with blood and bone or an organic vege fertiliser. Then as the plants grow continue to build up the soil around the stem with mulch or straw. This way you will get extra spuds!

## Book Review



### Book Review: 'Pest, Diseases and Beneficials'

A great new book by F. David Hockings and published by CSIRO based on the book 'Friends and Foes of Australian Gardens'. Every Aussie garden has many things scuttering, flying, hiding and lazing about, but we don't always know whether they are 'good' guys or 'bad' guys. Quality photography helps identify small animals, insects and diseases, with information on life cycles, habits and treatment. This book features many native garden problems which can be hard to diagnose with so little Australian information available. Also further details on beneficial fungi, bacteria, viruses and common horticultural mismanagement issues. -Danielle

### Muriel's hardware pick:

- Eco-flo gypsum is a fast acting liquid clay breaker. It is also useful to correct high sodium soils from grey water use and saltwater pool splash.
  - Eco-flo dolomite corrects acid soils and boosts calcium & magnesium levels. Being a liquid concentrate it is fast acting.
  - Eco-flo lime provides quick calcium for healthy plants and corrects acidic soils. More convenient than powdered lime.
- All three products are BFA certified organic.





## Easter and Mothers day treats



### Easter Ideas

Fun to grow and much healthier! Eggheads! Frog and duck design. \$12.95



Hippety-hop cups are a cute gift for children. \$12.95



Honey tea from 'House of Honey' is perfect for those who don't have a sweet tooth - honey flavour without the sweetness \$15.95

Honeycombe by 'House of Honey'. \$7.95. For those who like it sweet!

### Mothers Day

Pamper mum with Thurlby's luxurious pamper gift packs. \$22.95 - \$24.95



### Robert Gordon Australiana teacups

Australian made cups and saucers from Australian clay and printed in Australia. Back in stock soon are the popular mugs in the same range.

\$18.95 each. Saucers \$10.95



### Gumboots

New from Annabel Trends are cute and colourful spotted tall Gummies. Available in light blue at \$44.95 each. Short gummies for \$34.95 will be back in stock in a few weeks for autumn gardening.



### Wild Ancien Organics:

Infused with certified organic essential oils of lemon, lavender and sweet orange. Rich in antioxidants, this range is great for revitalising and restoring skin. Available in body balm, hand and body wash, bath salts, drawer sachets, soap, hand repair cream and room mist.



### New To the Shop

Australian lizard ornaments are handmade by Michelle from Michelle's Ceramics. These life-like lizards are native to WA's north west regions. Keep an eye out for new designs of lizards from the southwest in this range. Handcrafted quality ornaments that are weather proof and look great in the garden or hung on the wall. From \$44.95.



### Urban Composter City

This smaller version of the popular Urban Composter is suited to smaller households. \$39.95



# Zanthorrea nursery

155 Watsonia Road, Maida Vale  
Western Australia, 6057

Phone: (08) 9454 6260

Fax: (08) 9454 4540

www.zanthorrea.com